



# VOICES for the HARPETH

Issue No. 9, Summer 2008

## HARPETH RIVER WATERSHED ASSOCIATION

“Working together to protect and restore the Harpeth River Watershed and provide expertise in statewide conservation policy”

### BOARD OF DIRECTORS

---

Phil Pace, **Chairman**,

*The Conseco Group, Inc.*

Ernest Bacon, *Former Franklin  
Alderman*

Adam Ballash, *Boyle Investments*

Linda Breggin, *Environmental Law  
Institute*

Lori Canale

Jeff Carr, *Vice Chancellor*

*Emeritus, Vanderbilt University*

Mike Corn, *AquAeTer*

Mark Dietze, *Trillium Ventures, Inc.*

Nancy Hiatt

Skip Hindman, *Baker Donelson,*

*Bearman, Caldwell & Berkowitz*

David Lemke, *Waller, Landsen,*

*Dortch & Davis*

Josh May, *Medley Global Advisors*

Jonathan Mercer, *Martin Farm*

Chuck Robinson, *REI*

Mary Wade, *Wade & Egbert*

### ADVISORY BOARD

---

Orrin Ingram

John Ingram

Darrell Waltrip

Lisa Harless

Matt Dobson

Mailing Address: P.O. Box 1127

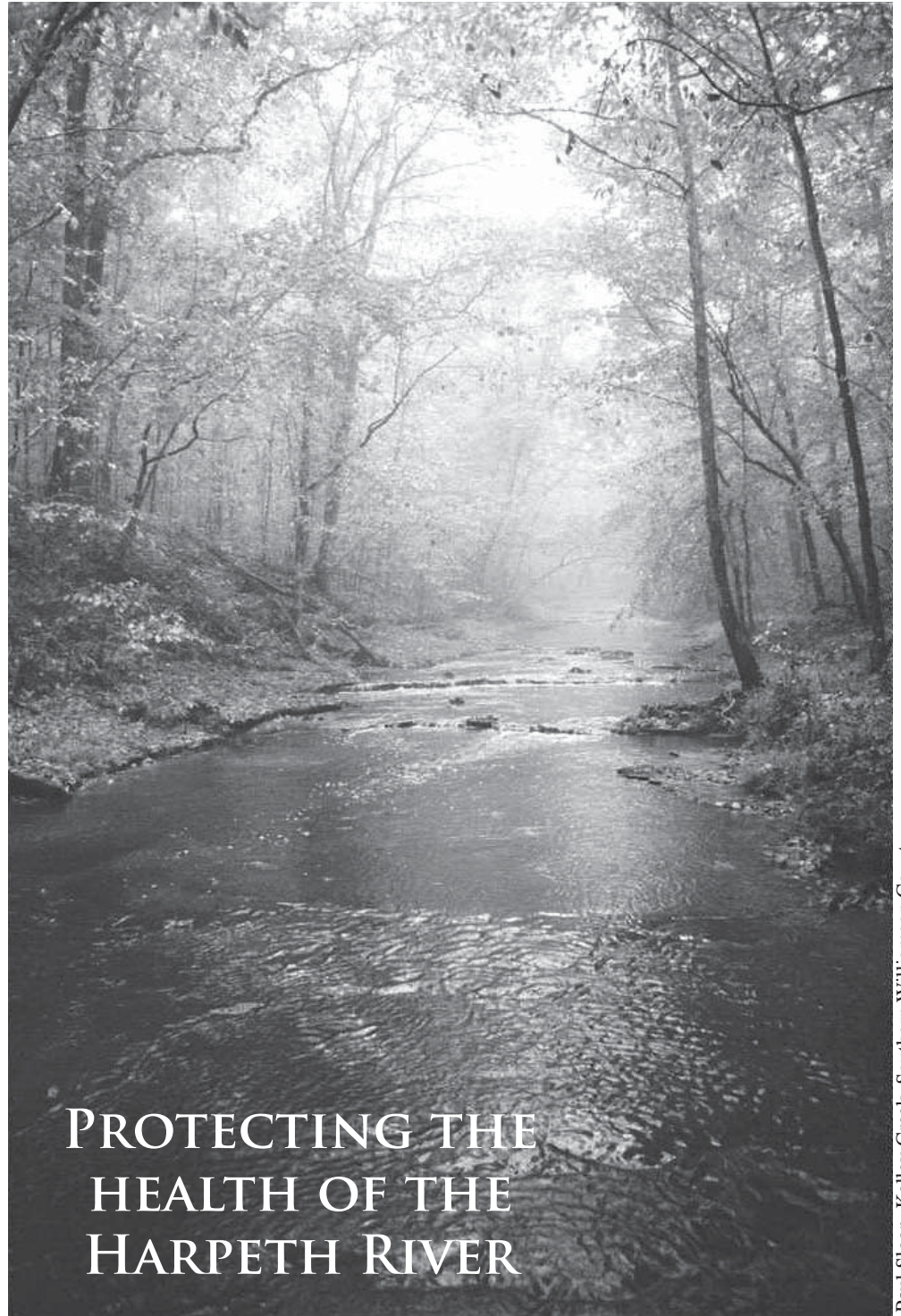
Franklin, TN 37065

Office Address: 1164 Columbia

Avenue, Franklin TN 37064

615-790-9767

[www.harpethriver.org](http://www.harpethriver.org)



## PROTECTING THE HEALTH OF THE HARPETH RIVER

Visit HRWA's new office at 1164 Columbia Avenue in Franklin to view our new rain gardens that reduce stormwater runoff and use native landscaping to reduce water use!

# HRWA 2007 ACHIEVEMENTS AND 2008 PRIORITIES

The Harpeth River Watershed Association made great strides in 2007 toward protecting and restoring the Harpeth River. This Middle Tennessee jewel is part of the globally unique rivers of the Southeastern United States with a diversity of fish and aquatic life found nowhere else. Spurred by the extreme drought of 2007, several years of work resulted in the state issuing the first permit for the City of Franklin's drinking water plant, the largest single withdrawer on the river since the 1950s. The state established critical flow levels to avoid pumping the river nearly dry in the summer.

With efforts by cities in the Harpeth, facilitated by our EPA grant, regulations that shape how development is designed to reduce stormwater runoff and maintain stream corridors have been improved. Our Restoration Program expanded with new funding from the state to work in the headwaters in Eagleville, and with funding from other partners to address erosion in Brentwood parks, on the Little Harpeth with Ensworth High School in Nashville, and others. We installed rain gardens and native landscaping so the new HRWA office can be a demonstration site for easy landscaping practices that protect water quality and reduce water use.

HRWA's efforts brought much attention to the ongoing chemical contamination of the Harpeth in downtown Franklin by Egyptian Lacquer. HRWA conducted a field study that found impacts on water quality and provided outside expertise to review the company's first clean up plan proposal that essentially was to let nature take its course. The state did not accept this plan.

In 2008 the priorities include:

- Modernizing future use of the Harpeth for drinking water by removing the lowhead dam in Franklin
- Providing canoe access along the entire river as part of the Harpeth River Blueway
- Developing plans to reduce sewer discharges into the river
- Conducting scientific studies of various problems affecting the river
- Ensuring that the ongoing chemical pollution flowing into the Harpeth is cleaned up by Egyptian Lacquer
- Launching the Heart of the Harpeth Campaign to work with landowners to protect the critical areas of the South and West Harpeth Rivers where high water quality streams are found and Turnbull, Brush and Jones Creeks.

We sincerely appreciate the support of our members, corporate donors, agency and private sector partners and volunteers that enable HRWA to be an effective voice for the Harpeth River as we work to develop and implement solutions to improve water quality, health, and enjoyment of this precious resource for all Tennesseans. ♦

## WHAT'S BEHIND THE LOWHEAD DAM IN FRANKLIN?



HRWA set out to answer that question in August of 2007. With support from the Tennessee Wildlife Resources Agency (TWRA), HRWA launched a study to characterize the sediment and other aspects of the impoundment as they pertain to possible removal of the lowhead dam. The dam was built in the 1960s and is used to create the reservoir for Franklin's old drinking water plant. The study was developed with the help of an advisory team with representatives from Tennessee's environmental and wildlife agencies, the EPA and the US Geological Survey and some private sector consultants.

HRWA collected sediment samples and tested them for metals (lead, chromium, mercury, etc), organic molecules including PCB's and total organic carbon. We determined the amount and nature of sediment in the impoundment and collected a variety of water quality data. HRWA enlisted the help of TDEC and TWRA to perform benthic macroinvertebrate, fish and mussel surveys for baseline data as well.

Preliminary results have been reported at two conferences, American Fisheries Society (AFS) and American Water Resources Association (AWRA). To date, nothing has been found that would prevent removal of the dam. Since this project began, TDEC granted a permit to the City of Franklin for water withdrawals that calls for a dam removal feasibility study. HRWA is in a position to save Franklin many tens of thousands of dollars toward their requirement with the work that is already well under way. The final report will be available online and the results show that there are no serious impediments to removal of the dam in terms of contaminants or large volumes of detrimental sediments. The biological studies done by TWRA and TDEC indicate that the dam *does* have a negative impact on the river's ecology. ♦



*The lowhead dam stops the flow of water during the low-flow summer and fall months.*



# EGYPTIAN LACQUER CONTINUES VIOLATING LAWS AND POLLUTING THE HARPETH



Policy and Planning  
Program

On June 23rd, Egyptian Lacquer (ELMCO) submitted another inadequate plan for a clean up of their hazardous contamination of the Harpeth and Liberty Creek to the Tennessee Dept. of Environment and Conservation (TDEC). The revised Corrective Action Plan (CAP) once again fails to define where the pollution lies underground and fails to have an adequate action plan for stopping the ongoing flow of a toxic mixture of chemicals into waters of the state. It also fails to have an active clean up plan for all of the contaminated soil and ground water they have created. The spill contains several contaminants including toluene, acetone and benzene, a known carcinogen. The pollution continues and the company continues doing business daily with no fines or other penalties over a year and a half after the state issued a consent order for ELMCO to create a clean up plan. This issue was first reported to TDEC in December 2006.

The first proposed CAP, submitted to TDEC on August 28, 2007 was found to be deficient because it did not meet many of the Consent Order requirements, including defining the extent of the contamination. The

HRWA's position is that an acceptable CAP would include plans for an active clean up of all released hazardous chemicals at the Egyptian Lacquer site and in any ground water pools that exist between the site and the Harpeth and Liberty Creek and that it would not perpetuate the misconception that monitored Natural Attenuation is an acceptable solution for any portion of the hazardous contamination that continues to flow into the Harpeth or Liberty Creek.

new revised CAP was to be turned into TDEC on April 24, but the new date extended that deadline until June 23, 2008. An active clean up would remove chemical contamination as required by EPA guidelines.

This continued foot-dragging on the part of the polluter has allowed hazardous chemicals to continue their daily flow into Liberty Creek and the Harpeth River. These releases are in violation of the Tennessee Water Quality Control Act and the Federal Clean Water Act, as well as federal laws governing the handling of hazardous materials such as RCRA and similar state laws. The pollution has been affecting water quality,

particularly in the low flow summer months. Sections of Liberty Creek are actually dead, covered in putrid decomposing bacteria and algae with no fish or wildlife surviving at all. This is directly behind Battle Ground Academy Lower School in downtown Franklin. Adequate studies have not been undertaken to make a determination that chronic effects are not an issue for humans or wildlife. One acute study on fathead minnows and water fleas was performed in early winter of 2007 and 20% of the insects died.

Not only have these ongoing violations of state and federal laws been allowed to continue, but a group of residents that live close to the hazardous chemical releases and are most affected by them felt their only alternative is to take legal action to stop the contamination that is affecting their quality of life and



*The chemical leak continues to degrade water quality in the Harpeth as absorbent booms fail to remove all the chemicals.*

property values. We are encouraging anyone who can help these community neighbors in their efforts to legally require the company to follow federal and state laws. If you are interested in supporting the neighbors of Daniels Drive to help with the technical support of their case against ELMCO please send your check to HRWA today for the SAVE LIBERTY CREEK FUND. Stay tuned for more information on this issue on the HRWA website. ♦

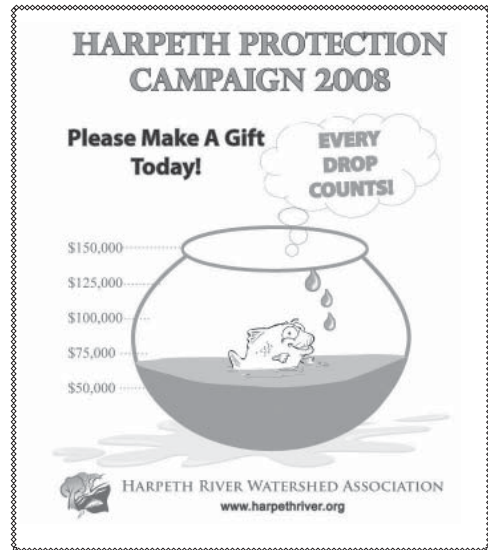
Please see [www.savelibertycreek.com](http://www.savelibertycreek.com) from the Families for Environmental Justice, citizens directly affected by this issue.

# HARPETH PROTECTION CAMPAIGN 2008

In 2007, we exceeded our \$125,000 Harpeth Protection Campaign. This year's Campaign has started off with a bang! We successfully raised \$60,000 in 60 days towards our \$150,000 goal for 2008. We have had many renewing members increase their annual membership and new members join thanks to our new events such as the Harpeth Protection Society Party and the Harpeth River Happy Hour.

Contributions to the Campaign help HRWA to do the scientific groundwork for the Harpeth lowhead dam removal, to continue to put pressure on Egyptian Lacquer to clean up its hazardous waste spill, help develop a plan to reduce sewer discharges into the river and provide more canoe access along the entire river as part of the Harpeth River Blueway Project.

This was our first year to launch our River Retailers Program and our "Here's what I'm doing for the Harpeth, and you?" media blitz during the first sixty days of the Campaign. Our River Retailers program was a wonderful outreach and awareness campaign where local retailers very generously allowed us to place contribution jars and membership brochures in their establishments so that we could encourage donations and membership to HRWA.



Please see our special Thank You section to our River Retailers below and support these businesses when you are shopping around the watershed.

The "Here's what I'm doing for the Harpeth, and you?" media blitz brought lots of publicity and attention to HRWA which took us around the watershed where people have done wonderful things to protect and improve access to the Harpeth River.

**PLEASE MAKE YOUR CONTRIBUTION TO THE 2008 HARPETH PROTECTION CAMPAIGN TODAY!**

## RIVER RETAILERS

Thank you to our first River Retailers! These local businesses agreed to participate by hosting a donation jar and membership materials. When shopping, let your change make change! Just drop your donation into the jar.



**FOGGY BOTTOM CANOE**

**CALL US TO BECOME A RIVER RETAILER**



MAPCO MART  
GRILLE MARX



JACKSON WINE & SPIRITS

WALTON'S ANTIQUES AND ESTATE JEWELRY





---

---

# RESTORING YOUR RIVER

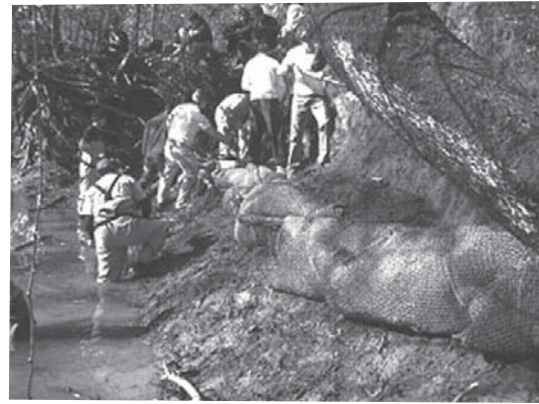
---

---



Restoration and  
Wildlife Protection  
Program

HRWA, with the assistance of numerous volunteers, has completed several restoration projects this year. Some projects, such as our work with students from **Ensworth High School**, began last year, but culminated in 2008. The Ensworth students participated in three streambank stabilization projects, completing the repair of a 110-foot section of highly eroded bank on the Little Harpeth River in Warner Park. HRWA received funding from the Tennessee Wildlife Resources Agency's (TWRA) Wallop Breaux Sport Fish Restoration Fund. This grant provided \$10,000 a year for 2007/2008 and \$5,000 for 2008/2009, and supports stream conservation practices in priority areas of the watershed in Davidson and Williamson counties. This includes stabilizing stream banks and planting native species of trees, shrubs and grasses for water quality and wildlife habitat.



*Ensworth students install cedar revetments in Warner Park.*

**Bob Parks Realty's** Franklin office staff joined our restoration team in 2008. This enthusiastic group participated in an streambank stabilization project at River Park in Brentwood. HRWA's work in River Park is contracted annually with the **City of Brentwood**.



*Bob Parks Realty works at Brentwood's River Park.*

We have also begun enlarging our restoration tool box by adding new treatments such as Filtrexx mulch socks for bank stabilization. We installed these socks at River Park in a location where our traditional cedar revetments were not able to withstand the shear stresses from the river. This tool allows HRWA to step up to the next level of streambank stabilization and fill a gap not covered by the larger restoration entities such as the Tennessee Stream Mitigation Program.

HRWA has started at home to protect the river with an ongoing landscaping for water quality restoration project. With expertise and materials donated from key sponsors (**Nashville Natives, Gardens of Babylon, Harpeth True Value and Tractor Supply Company**) and help from a great team of volunteers from **First United Methodist Church in Franklin**, as well as others, the property is being transformed into a wonderful demonstration site that can be enjoyed by all. To date, we have installed two rain gardens to capture stormwater runoff from the parking lot and yard, as well as a beautiful raised garden bed and a variety of other plantings throughout the property. By using drought tolerant species of native plants, we have enhanced the appearance of the property and provided excellent habitat for wildlife. ♣



*HRWA Staff and volunteers work to install a native rain garden to capture runoff from the parking lot at the office.*

HRWA protects the river by starting at home!  
Come see our new rain gardens and native landscaping and tell us about your efforts to protect the river. Visit our website to get information on how to build your own rain garden.

**HRWA Office: 1164 Columbia Avenue, Franklin**

# HRWA DEVELOPS STRATEGIES TO MEET WATER QUALITY STANDARDS



With a grant from the Environmental Protection Agency (EPA) that will wrap up at the end of 2008, HRWA is developing strategies to reduce pollutant levels and meet pollution reduction targets specified in plans that are required under the Federal Clean Water Act, known as total maximum daily loads (TMDLs). As a case study, HRWA has focused on the Fivemile Creek Subwatershed, known to most as the southern growth area of Franklin around the interchange of I-65 and Peytonsville Road/Goose Creek Bypass. According to the Tennessee

land has been approved for, and is already converting to, residential and commercial development. The analysis also shows that this build out with the current pollution reduction practices will create more water pollution, demonstrating the need for more aggressive pollution reduction strategies to ensure adequate protection of stream health. These include putting both standard and enhanced practices in place that address conditions in both existing developed and agricultural areas, such as requiring restoration of eroding streambanks in existing and new development, excluding livestock from creeks, and hooking up existing neighborhoods on septic to sewer. It also includes using techniques that allow rain to soak or infiltrate into the ground, rather than run off of roads, rooftops and parking lots which carries pollutants to nearby stream and causes streambank erosion. As the accompanying bar chart shows, in so doing, it is possible to reduce nitrogen, sediment and bacteria pollution and get close to achieving TMDL goals.

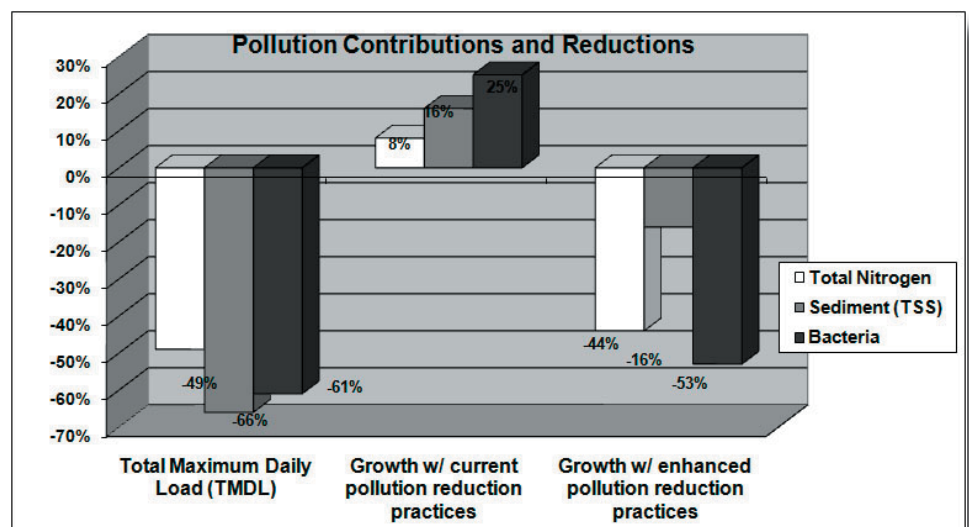


*Fivemile Creek, Redwing Farms Subdivision, Franklin*

Department of Environment and Conservation (TDEC), Fivemile Creek fails to meet water quality standards due to excessive amounts of sediment and E. coli. These pollutants, as well as nitrogen, adversely affect water quality and have been identified as coming from a variety of key sources including livestock/agriculture, septic tanks, lawn care practices, eroding streambanks, and new development.

HRWA assessed pollution loads associated with growth and changes in land use in the Fivemile Creek Subwatershed using the Watershed Treatment Model (WTM), a publicly-available, free tool from the Center for Watershed Protection. The model is being used to gauge the potential for reaching the pollution reduction targets specified in the TMDLs. HRWA selected Fivemile Creek as an area of study because 26% of the agricultural

Using the WTM analysis, HRWA is working with key partners, including the City of Franklin, Williamson County and other community representatives to develop a watershed management plan for Fivemile Creek that will make recommendations about how local stormwater and land-use planning ordinances can be designed to reduce pollution, as well as prioritize on-the-ground restoration efforts. ♦





*Thank You*  
**HRWA**  
**DONORS**

January 1-  
 December 31, 2007

**\$10,000 and above**

Darrell Waltrip Honda Volvo  
 Mr. Robert Brown  
 Mr. and Mrs. Joel Dobberpuhl  
 Mr. and Mrs. John R. Ingram  
 Mr. and Mrs. Orrin Ingram  
 Alex and Mary Wade  
 World Wildlife Fund

**\$5,000 - \$9,999**

Anonymous  
 Joseph Cashia  
 First Tennessee Bank  
 Mr. and Mrs. H. Rodes Hart  
 The Martin Foundation  
 Joshua May and Katherine Greenbaum  
 Mr. and Mrs. Willy Stern  
 Laura Anne Turner  
 Mr. and Mrs. Darrell Waltrip

**\$2,500 - \$4,999**

Atticus Trust  
 Barge, Waggoner, Sumner &  
 Cannon, Inc.  
 Boyle Investment Company  
 James W. Carell  
 The Conseco Group Inc.  
 Crosland, LLC  
 Mr. and Mrs. Mark Dietze  
 Mr. and Mrs. Matt Dobson  
 Fifth Third Bank  
 The Frist Foundation  
 Kennon Taylor Architects  
 Mr. and Mrs. David Lemke  
 The Pam Lewis Foundation  
 ParkTrust Development, LLC  
 Rock City Construction, Inc.  
 Stites & Harbison  
 Trillium Ventures Inc.  
 Wilson & Associates  
 Engineering & Surveying

**\$1,000 - \$2,499**

Mr. and Mrs. Bill Andrews  
 Mr. and Mrs. James Armstrong  
 Baker, Donelson, Bearman,  
 Caldwell & Berkowitz  
 Mr. and Mrs. Joe Bankemper

Barbara O. Smith Foundation  
 Beth and Preston Ingram  
 Foundation  
 Dorie Bolze and Claude Carmichael  
 Linda Breggin and Mike Vandenberg  
 Mr. and Mrs. Henry Brockman  
 Albert Buckley  
 Stewart Campbell  
 Dr. and Mrs. Dan Canale  
 Mr. and Mrs. Michael Corn  
 Mr. and Mrs. C.A. Craig  
 Robert Crosby  
 Mr. and Mrs. Brownlee Currey  
 Deer Creek Construction  
 Dr. and Mrs. Craig Ferrell  
 Kate R. W. Grayken  
 Mr. and Mrs. Henry W. Hooker  
 Matt H. Dobson Jr.

Foundation  
 Andrew May  
 John McFadden  
 McKerley and Noonan  
 Andrew Miller  
 Mr. and Mrs. Perry Ozburn  
 Mr. and Mrs. Phil Pace  
 Aubrey Preston and Michelle Barrett  
 Katie Hudson Regan  
 Regions Bank  
 Mr. and Mrs. Jason Ritzen  
 Robert J. and Helen H.  
 Glaser Family Foundation  
 Mr. and Mrs. Kenneth Roberts  
 Mr. and Mrs. Thomas Shell  
 Southern Land Company  
 Starfish Foundation  
 T&T Family Foundation  
 The Community Foundation  
 of Middle Tennessee

**\$500 - \$999**

Barge Cauthen &  
 Associates, Inc.  
 Bolen Asset Management  
 Mr. and Mrs. Ray Bolze  
 Mr. and Mrs. Donnie Bowlin  
 Mr. and Mrs. Richard Bracken  
 Brentwood United  
 Methodist Church  
 Mr. and Mrs. Barney Byrd  
 Mr. and Mrs. John Campbell  
 Jeffrey and Anne Carr  
 John and Marty Chiaramonte  
 John Cliff  
 Pam Davee  
 Corbette Doyle and Tim Gaetano  
 Brad Duke  
 Franklin First United  
 Methodist Church  
 Luke Froeb  
 Mr. and Mrs. William J. Hayes  
 Ingram Entertainment Inc.

Lynn Kober  
 Calvin Lehew  
 Middle Tennessee Electric  
 Membership Corporation  
 Andrew W. Miller  
 Mr. and Mrs. Corey Napier  
 John Noel and Melinda Welton  
 Mr. and Mrs. Arlo Owens  
 Mr. and Mrs. William Snyder  
 Wayne Spencer  
 St. Paul's Episcopal Church  
 Mr. and Mrs. Walter P. Stern  
 Mr. and Mrs. Mark Volman  
 Dudley White

**\$250 - \$499**

Mr. and Mrs. Robert Alford  
 Ralph Allen  
 Mr. and Mrs. N.A.C. Andrews  
 Art Asbury  
 Mr. and Mrs. Ernest Bacon  
 Dr. and Mrs. Sam Bastian  
 Mr. and Mrs. Robbie Beal  
 Mr. and Mrs. James W. Berry  
 Mr. and Mrs. Steve Blake  
 Mr. and Mrs. Steve Bolze  
 Mr. and Mrs. Ian Burr  
 Shelly Case  
 Tim Churchill and Mabel Arroyo  
 Mr. and Mrs. Marvin Clements  
 Mr. and Mrs. Tom Collins  
 Constant Craving Caterers  
 Mr. and Mrs. El Cox

**\$100 - \$249**

Amy Crawford  
 Mr. and Mrs. Warren Crawford  
 Mr. and Mrs. Art Creel  
 Mr. and Mrs. Jim Crowell  
 Baird Dixon  
 Mr. and Mrs. John Earwood  
 Mary Ann Fong  
 Jack Fosbinder  
 Scott Gain  
 Keith and Sarah Gann  
 George Garden  
 Mr. and Mrs. David W. Garrett  
 GE Matching Gifts  
 John Gerhardt  
 Mr. and Mrs. Scott Ghertner  
 Mr. and Mrs. Bill Haggard  
 Dr. and Mrs. Dan Halford  
 Mr. and Mrs. Todd Hastings  
 Tony Holcomb  
 Mr. and Mrs. Robert Jay  
 Mr. and Mrs. Charles Jennings  
 Jennifer Murray Jewell  
 Senator Jack Johnson  
 Mr. and Mrs. Douglas Joyce  
 Mr. and Mrs. Mark Kalil  
 Mr. and Mrs. David Knight  
 Dr. and Mrs. Harry Legan

Mr. and Mrs. Wilbur S. Logan  
 Kathy MacLachlan  
 Mr. and Mrs. Michael Marroni  
 Mr. and Mrs. Scott Martin  
 Leslie Maxwell  
 Joseph L. May  
 Joe McCaleb  
 Mr. and Mrs. Leonard McKeand  
 Mr. and Mrs. Bo Mitchell  
 Elizabeth Murphy  
 Mr. and Mrs. Roger Nixon  
 Mr. and Mrs. Khris Pascarella  
 Mr. and Mrs. Ed Pedersen  
 Mr. and Mrs. E. J. Poole  
 Mr. and Mrs. Robert Ring  
 Ambassador and Mrs. Joe Rodgers  
 Mr. and Mrs. Dick Rolfe  
 Mr. and Mrs. Gary Shockley  
 Mary Elizabeth Stern  
 Sarah Stern  
 Mr. and Mrs. Gerald Swedeen  
 Mr. and Mrs. David Talley  
 Mr. and Mrs. Brett Tarter  
 Mr. and Mrs. John TeSelle  
 Mr. and Mrs. Nelson Trabue  
 United Way of Williamson  
 County  
 Mr. and Mrs. Mike Walton  
 Mr. and Mrs. Tim Wells  
 Mr. and Mrs. Darrell Winningham  
 Mr. and Mrs. Michael Zarour  
 William S. Zinke and Brooke  
 Ackerly

Jennie Adams  
 AIG  
 Mr. and Mrs. Bill Akers  
 Mr. and Mrs. Stewart Anderson  
 Claire Armistead  
 Mr. and Mrs. Michael Barrett  
 Mr. and Mrs. Jay Barron  
 Mr. and Mrs. Jack Bass  
 Mr. and Mrs. Marvin Bastian  
 Mr. and Mrs. Dallas Beard  
 Dr. and Mrs. Charles Beauchamp  
 Betty Bellamy  
 Mr. and Mrs. Brian Bennett  
 Mr. and Mrs. Julian L. Bibb  
 Mr. and Mrs. Butch Bice  
 Mr. and Mrs. John Bolze  
 Mr. and Mrs. Greg Bowman  
 Roxanne Brunetti  
 Mr. and Mrs. William Bryan  
 Damon Byrd  
 Mr. and Mrs. Jeff Byrd  
 John G. Cannon  
 Mr. and Mrs. Frank Caprio  
 Mr. and Mrs. Will Cheek  
 Ellen Clark and Dr. Lou Laratta  
 Martin Clayton

Clear Channel Radio Nashville  
Margot Cook  
Alan A. Costa  
Mr. and Mrs. Dixie W. Coutts  
Currey Cattle Company  
Deborah F. Curtis  
Mr. and Mrs. David Czarnecki  
G. Lynn Davis  
Roger Day  
Lisa Denson  
Mr. and Mrs. John Dillon  
Kate Donnelly

Mr. and Mrs. Ben Doubleday  
Mr. and Mrs. Marc Driskill  
Charles A. Elcan  
Charlie and Emily Evans  
Mr. and Mrs. Josh Flegel  
Constance Forehand  
Mr. and Mrs. Whitley Forehand  
Mr. and Mrs. Bill Gabella  
Mr. and Mrs. David Gailani  
Mr. and Mrs. George Garden, Jr.  
Mr. and Mrs. Alan Gaus  
Marjone George and Jon Petty

Debi Granite  
Carla Green  
Mr. and Mrs. Erich Groos  
Donna Guest  
Mr. and Mrs. Gene Gwyn  
Mr. and Mrs. Mike Harkreader  
Mr. and Mrs. Mathew Healy  
Senator Douglas Henry  
Mr. and Mrs. Preston Hester  
Mr. and Mrs. Henry James  
John Jaszcz and Judith Cataldo  
Sylvia Jennings

Bridget Jones  
Dr. and Mrs. Phillip Jones  
James Kennon  
Anne Kenny  
Mr. and Mrs. Joseph King  
Dwight Kiser  
Mr. and Mrs. Woodie Knight  
Jennifer Krahenbill  
John Lackey  
LandDesign  
Mr. and Mrs. Scott Layden  
Jim Leeson  
Bill Lewis  
Lillie Belle's of Franklin  
Mr. and Mrs. Rick Lockwood  
Tom Loventhal  
Mr. and Mrs. Britton Lowry  
Nancy MacLean  
Ellen Martin  
Mrs. James W. McDonnell  
Miriam McFadden  
Miles Mennell  
Mr. and Mrs. Tom Moon  
Dr. and Mrs. Jason Morrow  
Mr. and Mrs. David Murphy  
Lannie Neal  
Mr. and Mrs. Michael Niblett  
Mr. and Mrs. James A. O'Neill  
Mr. and Mrs. Robert Paslay  
Nancy Wendling Peacock  
Thomas H. Peebles  
Mr. and Mrs. Kenneth H. Pinkston  
Paul Polycarpou and Mollye Brown  
Mr. and Mrs. Kirk Porter  
Ronald Qualls  
Myrtle Qualls-Wulf  
Mr. and Mrs. Mark A. Quarles  
Mr. and Mrs. Walt Quinn  
Dr. and Mrs. James Ramsey  
Gregory Reed  
Thomas Reed  
Sydney J. Reichman  
Mr. and Mrs. Fred Reynolds  
Robert E. Rice  
Mr. and Mrs. Jeff Ridings  
Judd Stern Rosenblatt  
Larry Rosinski  
Kathryn Ruggles  
Manuel Benjamin Russ  
Mr. and Mrs. Robert V. Russell  
Mr. and Mrs. Bob Rutherford  
Kaye Savage  
Dr. and Mrs. Jonathan Schwartz  
Ronald Shank  
Robert Sharpe  
Mr. and Mrs. Jonathan Shayne  
Ed Silva  
Mr. and Mrs. Matt Spencer  
Mr. and Mrs. Stuart Spigel  
Patricia Stanley

## 2007 FINANCIAL STATEMENT

Summarized Audited Financial Statement  
Fiscal Year Ending December 31, 2007

Audited financial statements are prepared by McKerley and Noonan. Copies available upon request.

### Statements of Financial Position

Assets	Dec 31, '07	Dec 31, '06	\$ Change	% Change
Cash & Receivables	\$67,603	\$151,764	\$(84,161)	-55%
Furniture & Equipment (Net)	18,042	9,816	8,227	84%
Other Assets	3,423	2,116	1,307	62%
<b>Total Assets</b>	<b>\$89,068</b>	<b>\$163,695</b>	<b>\$(74,627)</b>	<b>-46%</b>
<b>Liabilities &amp; Net Assets</b>				
Liabilities - Total	\$25,855	\$15,526	\$10,329	67%
Restricted Net Assets	18,198	-	18,198	100%
Net Assets	45,016	148,169	(103,154)	-70%
<b>Total Liabilities &amp; Net Assets</b>	<b>\$89,068</b>	<b>\$163,695</b>	<b>\$(74,627)</b>	<b>-46%</b>

### Statement of Activities & Change in Net Assets

Revenue	Unrestricted	Restricted	Total	%	
Contributions	\$271,639	\$-	\$271,639	58%	
Grants	-	149,969	149,969	32%	
Contract & Other Income	6,254	-	6,254	1%	
Events (Net)	40,620	-	40,620	9%	
<b>Total Revenue (Net)</b>	<b>\$318,514</b>	<b>\$149,969</b>	<b>\$468,483</b>	<b>100%</b>	
<b>Expense</b>					
	<b>Program</b>	<b>Fundraising</b>	<b>Mgmt</b>	<b>Total</b>	<b>%</b>
Staffing	315,555	68,312	36,676	420,543	74%
Operating	128,359	17,283	5,452	151,093	26%
<b>Total Expense</b>	<b>443,913</b>	<b>85,595</b>	<b>42,128</b>	<b>571,637</b>	<b>100%</b>
<i>Percentages</i>		<i>78%</i>	<i>15%</i>	<i>7%</i>	<i>100%</i>
<b>Total Change in Net Assets</b>			<b>\$(103,154)</b>	<b>-22%</b>	

#### Note from the Director of Finance

In 2007, HRWA partially funded operations from its cash reserve account due to unexpected and uncontrollable delays in processing certain grant awards. These grant contracts were finalized in late 2007 and cash reserves are expected to be restored in 2008.



Mr. and Mrs. Mike Staples  
J.D. Steinhilber  
Paula Swedeen  
Sue Valenti  
June Van Slyke  
Mr. and Mrs. John Vandenberg  
Lee Waddell Curtis  
Mr. and Mrs. James Otey Walker  
Mr. and Mrs. Ted Walker  
Kris Weeks and Michael Belch  
Lisa Scott and Sherry Welch  
Barbara Whittemore  
Mr. and Mrs. Nicholas Wiggishoff  
Mr. and Mrs. Bill Williams  
Mr. and Mrs. Jeff Williams  
Mr. and Mrs. Ridley Wills, II  
Kimberley Windham  
Mr. and Mrs. Doug Wise  
Mr. and Mrs. Dick Wooten

Deloitte Services LP  
Mr. and Mrs. Danny Dickerson  
Mr. and Mrs. Stephen Dickert  
Mr. and Mrs. Tim Diehl  
Hugh DuPree  
Mr. and Mrs. Christopher Durik  
Lucinda Dyer  
Mr. and Mrs. Dennis Edelen  
Kathleen Ervin  
Lincon Ewing  
Mr. and Mrs. Ross Falzone  
Elizabeth Fiss  
Mr. and Mrs. Michael Fitzpatrick  
Jerre Fly  
Foggy Bottom Canoe Rentals  
Cynthia B. Francis  
Mr. and Mrs. Mike Frasier  
Mr. and Mrs. Mark French  
Mr. and Mrs. Al Frey  
Nancy Gentry  
Mr. and Mrs. John Gifford  
Mary Goade  
Marjorie Goff  
Mr. and Mrs. John Gregg  
John Guider  
Mr. and Mrs. Jacky Gullett  
Emma Hall  
Katherine Hall  
Mr. and Mrs. Dewey Hamrick  
Susan Harlan  
Mr. and Mrs. Robert E. Harwell  
Mr. and Mrs. Hal Hassall  
Randy Hedgepath  
Mr. and Mrs. Joseph Hersh  
Michael Hickey  
John Hilley  
Mr. and Mrs. Kenneth Hohman  
Mr. and Mrs. Scott Huddleston  
Chris Hudson  
Dr. and Mrs. William Huffman  
Fred Hurt  
John Idoux  
Shearer Irvin  
Brandi Irwin  
Susan James  
Peter and Rudy Jordan  
Mr. and Mrs. Lee Justis  
Mr. and Mrs. Andrew Kim  
Joey King  
Thomas King  
Mr. and Mrs. Stephen Kivett  
Anne Knauff  
Ruth Lee  
Mr. and Mrs. Alan Lequire  
Mr. and Mrs. Eric Lewis  
Mr. and Mrs. Ronald S. Ligon  
Ryan Lovelace  
S. Paul Lyle  
David C. Maddox  
Dianna Maher  
Robert Martineau and Pam Eddy

Mr. and Mrs. Daniel McCaughna  
Mr. and Mrs. Thomas R. McCoy  
Taylor McDonald  
Mr. and Mrs. Phillip McGovern  
Shirley McGrew  
Keli McInnes  
Janeth McKendrick  
Annie McWilliams Middleton  
Mr. and Mrs. Bruce Meyer  
Mr. and Mrs. Mark Michael  
Mr. and Mrs. Mark Miller-  
McLemore  
Mr. and Mrs. Earnest Moore  
Mr. and Mrs. Stuart Moore  
Dr. and Mrs. Michael Mullins  
Sharmila Murthy  
Mr. and Mrs. David Neese  
Jeanette Norman  
Mr. and Mrs. Larry Nunes  
Rossiter O'Shea  
Jefferson Ockerman  
Michael J Orton  
Mr. and Mrs. Thomas Osborne  
Debbie Panaia  
Christine Panger  
Mr. and Mrs. Jurgen Pannock  
Mr. and Mrs. Forrest Parmley  
Soraya CatesParr  
Mr. and Mrs. John Perez  
Mr. and Mrs. Felix Perry  
PHP/ Cariten Healthcare  
Dee Plunkett  
Brian Ramming  
Benjamin Reeves  
Ann Regen  
James F. Reyland  
Brech Roberts  
Mr. and Mrs. Marc Rogers  
S. Todd Rogers  
Cynthia Rohrbach  
Ed Rothschild  
Mr. and Mrs. John Sanders  
Marlin Sanders  
Robert Schneider  
Donovan Schultz  
Mr. and Mrs. Brian Schwarz  
Mr. and Mrs. Judson Shafer  
Mr. and Mrs. Bo Sheller  
Dr. and Mrs. Ed Shultz  
Signature Tent and Event Rentals  
Mr. and Mrs. Oman Sloan  
Mr. and Mrs. Jeffrey Smith  
Mr. and Mrs. Jimmy Smith  
Dr. Margaret Smith  
Spicer, Flynn & Rudstrom  
Janet Sterchi  
Zachariah L. Stern  
Helen Stewart  
Andy Sudbrock  
Mr. and Mrs. Thomas Swain  
The Trendex Group, Inc.

Mr. and Mrs. Tom Thomson  
Mr. and Mrs. Joe Torrence  
David Turner  
Mr. and Mrs. Michael W. Walker  
Mr. and Mrs. Douglas Ware  
Emily Wendell  
Phil Wepking  
Mr. and Mrs. Kevin White  
Mr. and Mrs. Doug Whittum  
Eleanor Willis  
Joey Wilson  
Karen Wilson  
Mr. and Mrs. Lewis Wood  
William J. Yost  
Mr. and Mrs. Ed Young

### *In-Kind Donors*

Arrington Vineyards  
Jan Batts  
Blue Moon Lagoon  
Brentwood Skate Center  
Chaffin's Barn  
John Chiaramonte  
Cheekwood Botanical Garden  
Constant Cravings  
Corrieri's Formaggeria  
Creeside Swim School  
Cutter's Lawn Maintenance  
Darrell Waltrip  
Enjoue  
Evins Mill  
Exhibitor Source/Skyline  
Michael Fitzpatrick  
Foggy Bottom Canoes  
Full Circle Farms  
Gardens of Babylon  
Vince Gill & Amy Grant  
Grassland Market  
Gregory's Salon  
John Guider  
Mike Harris  
Harpeth Bicycles  
John and Nancy Hiatt  
Harpeth Tru-Value  
Illusions Spa  
Alan Jackson  
Charles Jennings  
Kavass and Chastain  
Keep Williamson Beautiful  
Landmark Booksellers  
Pam Lewis  
Lightning 100  
Lipman Brothers  
Loveless Cafe  
Mason Corporation  
Merridee's Breadbasket  
Miles Auto Spa  
Moore and Moore Gardens  
Nashville Chamber Orchestra  
Nashville Natives

### **\$1-99**

Acuff and Associates, Inc.  
Sharon Aizer  
Patricia Anderson  
Mr. and Mrs. Jeremy Atack  
Pedro Atencio  
Mr. and Mrs. Michael Atnip  
Christine Barberic  
Judith Barnes  
Bruce Barry  
Al Beasley  
Mr. and Mrs. Marion Berg  
Nancy Berry  
Sandy Bivens  
Gwendolyn Blanton  
Tedra Bledsoe  
Mr. and Mrs. Maurice Bondurant  
Daniel Boone  
Davie Booth  
Chris Bowles  
Mr. and Mrs. Tom Boylan  
Mr. and Mrs. Robert Brandt  
Jill Brown  
Mr. and Mrs. Rick Burgoyne  
Mr. and Mrs. Karl Burr  
Porter Calhoun  
Donald Capparella and Amy  
Dorfman  
Michael Carpenter  
Mr. and Mrs. Gary Carrigan  
David Carter  
George H. Cate, Jr.  
Robert Christie  
Robert Clark  
Mary Helen Clarke  
Mr. and Mrs. John Claybrook  
Mr. and Mrs. Dave Cline  
Marilyn Cross  
Patrick Cummings  
Cheryl Danley  
Robert DeLaney



## HRWA SALUTES EAGLE SCOUT ANDREW OWENSBY

HRWA often works with Boy Scouts seeking to earn their Eagle rank by performing project management services that help restore and protect the Harpeth River. Andrew Owensby was seeking a challenge and committed himself and his troop to a project that would assess water quality in several streams in Bellevue that had not been assessed by the Tennessee Department of Environment and Conservation (TDEC).

Working alongside HRWA staff, Andrew and his father Craig visited several unassessed stream sites to determine suitability for this project. After settling on five sites, Mike Cain, HRWA Restoration Manager, led a series of training sessions to teach Andrew's team macroinvertebrate (stream bugs) collection and identification, visual stream assessment and chemical parameters data collection. After two classroom and two field sessions, Andrew was ready to lead the project through the summer of 2007.

This project, featured in a Tennessee Wildside program, helped highlight HRWA's role in education and water quality monitoring.



*Andrew (crouched) and a team member examine a sample of macroinvertebrates.*

Andrew's completed project is an excellent example of scientific reporting. HRWA supplied his report to TDEC leading to a call asking if Andrew might be interested in being a TDEC field office intern. Andrew received his Eagle rank at an Eagle Court of Honor March 15, 2008. Congratulations Andrew! ♦



## LOST LOON TRIATHLON



The 5th Annual Lost Loon Triathlon was held on May 4, 2008 at Long Hunter State Park. The event benefitted the Harpeth River Watershed Association. Riders, runners and paddlers of all ages joined in the fun as they made their way through the 15 mile course. This triathlon is the only one of its type in Tennessee. It is truly a family event – competition is not at the

forefront – it's the only triathlon around that encourages participation by kids and allows entrants to set their own distances and pace. The Lost Loon truly has something for everybody!

Special thanks to Willy Stern, Race Director, for organizing this special event. View photos from the race at [www.lostloons.com](http://www.lostloons.com).



Having a fun event? Please consider making HRWA your beneficiary! Contact us at 615-790-9767 for information.





# MEMBERS ARE THE KEY TO MAINTAINING A VOICE FOR THE HARPETH RIVER

Since its inception in 1999, the Harpeth River Watershed Association, the voice for the Harpeth River, has been actively improving the health of the river for everyone who lives, works or plays in the watershed. Currently your river is facing challenges from industrial pollution, eroding streams and wildlife endangerment. HRWA has been implementing solutions to meet these challenges, but we need your help to put solutions in motion. *Without you, there would be no voice for this Middle Tennessee jewel.*

*Members are vital to maintaining a voice for the Harpeth. Basic memberships start at \$25.*

## Member Benefits Include:

- HRWA tote bag (with Membership Plus category and above)
- Membership and Pollution Hotline Card
- Social activities with like-minded people who enjoy the outdoors
- Opportunities to learn how to be "RiverSmart"
- Annual newsletter, Downstream news email bulletins and one free education program for your group
- Free or discounted family-fun events to explore the watershed



*Family Float on the Harpeth River*

Mailing Address:  
P.O. Box 1127, Franklin, TN 37065  
615-790-9767

## *Harpeth Protection Society*

By becoming a member of the Harpeth Protection Society, you join a core group of HRWA donors that enable crucial work to preserve the river. Your gift of \$1,000 or more allows us to provide expertise and on-the-ground improvements throughout the watershed. Please make your 2008 gift to the Harpeth Protection Campaign as a member of the Harpeth Protection Society today, and invest in the future of one of your most precious resources-clean and abundant water.

**Contact Pam Davee at 615-790-9767, ext. 104 or [pamdavee@harpethriver.org](mailto:pamdavee@harpethriver.org) for more information.**

Watch our website for upcoming events such as hikes, birding and wildflower tours, flyfishing and social events like our first Harpeth Happy Hour held at Blue Moon Lagoon this spring!

Check out the HRWA Video on our website  
[www.harpethriver.org](http://www.harpethriver.org).

---

**Call our office at 615-790-9767**

**or visit our website at**

**[www.harpethriver.org](http://www.harpethriver.org)**

**to join.**

**Please make a gift today.**

---



VOICES FOR THE HARPETH Newsletter Team: Dorie Bolze, Sarah Gann, Pam Davee, Lindsay Gardner, Cam West  
Newsletter Layout: Sarah Gann  
Contents © by Harpeth River Watershed Association unless otherwise noted. Permission to reproduce provided original source credited.

# HARPETH PROTECTION SOCIETY EVENT

THANK YOU TO THE 2008 CHAIRS, JOHN AND STEPHANIE INGRAM



Nashville Mayor Karl Dean, Anne Davis,  
John Ingram--host

A perfect spring evening set the jovial mood on March 26, 2008, when members of the Harpeth Protection Society were honored for their support of the Harpeth River Watershed

Association. HRWA, the Board of Directors and honored guests gathered at the home of the 2008 Society chairs, Mr. and Mrs. John Ingram, to recognize the society's members and their efforts to care for and preserve the Harpeth River. Greeted by a trio of bluegrass musicians, guests enjoyed local organic fare and cocktails in the beautiful setting of the Ingram home.

The Harpeth Protection Society was formed to support HRWA's mission to restore and protect the

ecological health and biodiversity of the Harpeth River system. The 2008 goals are to modernize any future use of the Harpeth for drinking water by removing the lowhead dam in Franklin; ensure the clean up of Egyptian Lacquer's ongoing contamination affecting people, fish and wildlife;



Orrin Ingram, Dorie Bolze,  
Emily Evans - Metro Councilwoman



Matthew and Llew Ann King,  
Hank and Mary Brockman - Williamson  
County Commissioner

develop a plan to reduce sewer discharges into the river; and provide more canoe access along the entire river.

*Photos by Peyton Hoge*

## THANK YOU TO OUR 2007 HOOTENANNY SPONSORS

**PRESENTING SPONSORS; RIVER CHAMPION** - Darrell Waltrip Honda Volvo  
**RIVER GUARDIAN** - First Tennessee Bank, **RIVER DEFENDER** - Trillium Ventures, Inc

**ARTISTS** - J. Fred Knobloch, Jellyroll Johnson and Thom Schuyler

**HONORARY CHAIRS** - Darrell and Stevie Waltrip, Orrin and Lee Ann Ingram

**TABLE SPONSORS** - Barge Waggoner Sumner & Cannon, Inc., Boyle Investments, The Consec Group Inc., Crosland Tennessee, Fifth Third Bank, Kennon Taylor Architects, Newmark Homes, Park Trust Development LLC, PLA Media, Regions Bank, Rock City Construction, Stites & Harbison PLLC, Wilson & Associates Engineering and Surveying

**DONORS** - Team Green, Lightning 100, Lipman Brothers, Signature Tent and Event Rentals

**SILENT AUCTION CO-CHAIRS** - John and Marty Chiaramonte

**VOLUNTEERS-** Bob Bloomfield, Jan Sadat, Chris Sprankle, Earl and Barbara Wheat, Mary Hill, Ed Raymond, Julia Halford, Jennifer Krahenbill, Marcus Lackey, Dale Whitehead, Arlo Thomas, Franklin Florist, Miles Mennell, Jennifer Stewart-Wright, Marilyn Cross, Robert Hankins, John and Marty Chiaramonte, Lucinda Dyer and Helen Stewart





Graphic by Jim Bryant

# SAVE THE DATE FOR NASHVILLE'S SIGNATURE GREEN EVENT

Saturday, October 25, 2008

Country Music Hall of Fame and Museum®



Featuring "Songwriters in the Round" with Rivers Rutherford and Friends

## For tickets or sponsorship opportunities contact:

Cam West, Event Director  
camwest@harpethriver.org  
615-790-9767 ext. 109

Exclusive VIP tickets available for \$200 and include a seated dinner of local organic fare, concert, silent auction and private museum tour. *Tickets are limited, get yours today!*

General Admission tickets also available.

Presented by **NISSAN**

===== *See [www.harpethriver.org](http://www.harpethriver.org) for details.*=====

## HARPEETH RIVER SCENIC BLUEWAY

The Harpeth River Blueway, a joint endeavor between HRWA, Tennessee Scenic Rivers Association (TSRA) and a variety of partners, is working to create or improve public paddling/recreational access points along the Harpeth River. The goal of the Blueway Project is to promote recreational opportunities, safety and preservation of natural and cultural features along the Harpeth River. In 2007, the project was initiated with access point creation/enhancement and signage posted in the Harpeth River State Park in Cheatham County. To date, access structures have been installed at Hidden Lake in the Harpeth River State Park and the Williamson County Recreation Complex (WCRC) in Franklin, TN.



*New canoe access at Williamson County Recreation Complex built by TSRA with a grant from REI in Brentwood.*

HRWA and its partners were the proud recipients of a State of Tennessee Community Enhancement Grant in the amount of \$6,500 and \$13,000 from REI in Brentwood. Many thanks to Representative Gary Moore, Representative Mike Turner, Senator Joe Haynes, and Senator Douglas Henry for providing this generous funding that will go to support the construction of additional structures in Williamson and Davidson Counties. The access structures have environmental, educational and social benefits, including providing safe public access to the Harpeth River, which is now fairly limited. In particular, the structure at the WCRC was designed to help mitigate existing bank

stabilization and erosion problems at the site, thereby helping to improve water quality. The Blueway will ultimately be accompanied by a map and signage at all the access locations. As part of a larger effort, HRWA is also leading discussions with the goal of standardizing water trails/Blueways across Tennessee. **Harpeth River Blueway Project Partners:** HRWA, TSRA, Harpeth River State Park, TDOT, TDEC, TWRA, US Army Corps of Engineers, Metro Nashville Government Trails & Greenways, Williamson County Parks & Recreation, TN Parks and Greenways Foundation, and Kingston Springs Fire Department.

Visit [www.harpethriver.org/harpeth/public-access-points](http://www.harpethriver.org/harpeth/public-access-points) to see a map of access sites to date.

---

## HRWA RECEIVES \$50,000 FROM NISSAN NORTH AMERICA

---

Nissan North America made a big splash when it relocated its headquarters to Williamson County, but little did we know that they would also make a splash on the Harpeth. On a balmy May morning as a group of almost 100 Nissan employees and family members got together to enjoy the Harpeth as part of an outreach program supported by Nissan in 2007, Nissan announced a new \$50,000 partnership with HRWA to support several key program areas.

With Nissan's support HRWA will be working on

If you would like to learn more about becoming a corporate partner to help support HRWA's programs and initiatives, please call Pam Davee, Development Director, 790-9767.

improved recreational access to the river, a dissolved oxygen study for 2008 to monitor water quality, and in stream flow and water quality issues in the mainstem of the

river, such as improved sewer plant permits, storm water ordinances and eliminating illegal hazardous discharges from Egyptian Lacquer. In addition to these policy and outreach efforts, Nissan will also be the presenting sponsor for the Fifth Annual Harpeth River Jam, our newly redesigned evening of live music and celebration of green living. Stay tuned to the HRWA website for details.



*Nissan employees enjoy a canoe float on the Harpeth River.*

### ***In-Kind Donors*** (continued from pg. 9)

Nashville Zoo  
 Originia Spa  
 Craig Owensby  
 Carole Parmer  
 Passport Medicine  
 Joel Peters  
 Play It Again Sports  
 Puckett's Grocery  
 Randy Rayburn  
 Rebecca's Furniture Design  
 REI Store 64  
 Jan Sadat  
 Shuff's Music  
 Signature Tent and Event Rentals  
 Sperry's  
 Chris Sprankle  
 Southern Events  
 Southwest Airlines  
 Tennessee Aquarium  
 TN Women's Theater Project  
 Tractor Supply Company  
 Laura Turner  
 The Big Bang  
 The Boat Locker  
 The Farm at Natchez Trace  
 The Flying Horse  
 The Grand Ole Opry  
 The Melting Pot  
 The Picnic Cafe  
 The Red Pony  
 The Registry

### ***Volunteers***

The Tack Trunk  
 Unruli Aveda Salon  
 Walton's Antique Jewelry  
 Waste Management  
 Campbell West  
 What's In Store  
 Whipporwill Farm Day Camp  
 Dale Whitehead  
 Wild Oats Market  
 Sharon Aizer  
 Dr. Frank Bailey  
 Zachary Batey  
 Nora Beck  
 Felicia Black  
 Anita Bondurant  
 Eli and Bruce Brand  
 Dan Brennan  
 Jeni Burnside  
 Carol Byrd  
 Max Cain  
 Susan Carr  
 John and Marty Chiamonte  
 Jim Chittum  
 Lee Clark  
 Marilyn Cross  
 Marcus Daschner  
 Donna Dickerson  
 Melissa Donohue  
 Lucinda Dyer  
 Eagleville High School- Core Adventure Team

Ensworth High School  
 Kim Elkin  
 Mary Enkema  
 Joanna Fidel  
 Claudia and John Gifford  
 Bob Gupton  
 Harpeth River State Park Rangers  
 Julia, Dan and Meg Halford  
 Robert Hankins  
 Mary Harl  
 Connor Haugh  
 Mary Hill  
 David Hiller  
 Jennifer Jewell  
 Jennifer Krahenbill  
 Marcus Lackey  
 Whitney Lasseter  
 Ned Lea  
 Matt Lefavor  
 Ryan Lovelace  
 Cooper Magli  
 Scott Martin  
 Eleanor McClain  
 Miles Mennell  
 Leslie Morales  
 Jennifer Murray Jewell  
 John Oehmig  
 Michael Orton  
 Andrew Owensby  
 Jane Polansky  
 Tom Puckett  
 Anna Ransler

Ed Raymond  
 Frances Regan  
 Chuck Robinson  
 Mitchell Scalf  
 Patty Shultz  
 Jennifer Smith  
 Jimmy Smith  
 Marshall Spencer  
 Cindy Steine  
 Helen Stewart  
 Jennifer Stewart-Wright  
 Andy Sudbrock  
 Ruth Swedeen  
 David Talley  
 Lori Thomas  
 Lele Thompson  
 Anna Tuttle  
 Lance Varden  
 Dee Dee Wade  
 Mary Fall Wade  
 Mike Walton  
 Earl and Barbara Wheat  
 Dale Whitehead  
 Jackie Wiggishoff  
 Carol and Adam Wilck  
 Yvonne Williams  
 SORBA Mtn. Bike Team  
 Team GREEN  
 Scout Troops: 41, 131, 448, 624  
 Cub Scout Pack 123  
 Girl Scout Troop 1275



## GO GREEN WITH REUSABLE BAGS FROM ALTERNATIVE GREEN

Tired of contributing to the millions of plastic bags littering our landscape? Now you can buy great reusable bags and help support the Harpeth River Watershed Association. Plastic bags breakdown into tiny bits, contaminating our soil and water.

Envirosax® bags rethink the future of shopping. The stylish, environmentally friendly carry-on bags are lightweight and easily fit into your glove compartment or purse. The problem of forgetting your green bags when grocery shopping is solved! Bring your own bag to the grocery store with these attractive reusable bags from Envirosax®. Purchased in packs of five for \$40, Envirosax® bags present a simple and stylish alternative to plastic or paper shopping bags.

### How to Order

Place your order via PayPal or call 615-337-1658 Monday through Saturday 9:00 am to 5:00 pm central time. Orders will ship within five business days pending availability and credit verification.

You will receive an email from [alternativegreen.net](http://alternativegreen.net) if additional information is needed.

### Payment Methods

Alternative Green accepts Visa, MasterCard, American Express, Discover and ATM debit cards. They do not accept cash, checks, money orders or CODs.

Visit [www.alternativegreen.net](http://www.alternativegreen.net) for more details.

**\$10 from every purchase of a Five-pack of bags goes directly back to HRWA.**

Dimensions: Pouch Size 9" x 6";  
Individual Bag Size 19.5" x 16" x 5";  
Individual Rolled Up Bag Size 4" x 1.5" diameter; Each bag holds the equivalent of two supermarket plastic bags. Bags come in six different patterns and a variety of colors.



Thank you to McQuiddy Printing Company, our 2008 printing partner. We are pleased to present this newsletter printed on recycled FSC certified paper with vegetable inks.

## VOLUNTEER OPPORTUNITIES

To volunteer for any event, please contact HRWA at 615-790-9767, ext. 108 or email the volunteer coordinator, [sarahgann@harpethriver.org](mailto:sarahgann@harpethriver.org).

### Volunteer Scientists - Dissolved Oxygen Study

Volunteers are needed to participate in the annual dissolved oxygen study. Training will be held at the HRWA office at 1164 Columbia Avenue on Tuesday, August 19 5:30-7:30 p.m. and Saturday, August 30 9:00-11:00 a.m. The study will take place September 5-14 with three sampling days. Please check the HRWA website for more information. Previously trained volunteers are encouraged to participate!

### Cumberland River Compact's Dragon Boat River Festival - August 23

Volunteers are needed to help with HRWA's education booth during the second annual Dragon Boat Festival held in Nashville's River Park.

### Fairview's Nature Fest at Bowie Park - September 13

Volunteers are needed to help with HRWA's education booth during Nature Fest at Bowie Park.

### Harpeth River Jam - October 25, 2008 Country Music Hall of Fame and Museum®

Volunteers are needed to help with organization, public relations, silent auction, invitations and more!

HRWA is also seeking volunteers to help in the office with mailings, data entry, filing and more.

Harpeth River Watershed Association  
P.O. Box 1127  
Franklin, TN 37065

NONPROFIT ORG  
U.S. POSTAGE  
PAID  
NASHVILLE, TN  
PERMIT 485

## THE HARPETH RIVER IS YOUR RIVER

HRWA STAFF 615-790-9767

Dorene Bolze, *Executive Director*

Pam Davee, *Development Director and Policy Specialist*

Lindsay Gardner, *Director of Science and Restoration*

Roger Smitchens, *Director of Finance and Administration*

Sarah Gann, *Director of Outreach, Volunteers and  
Membership, Webmaster*

Cam West, *Associate Director of Development and Events*

Michael Cain, *Watershed Assessment and Restoration  
Manager*

Casey Braddy, *Membership and Development Coordinator*

Josh Thompson, *Watershed Assessment and Restoration  
Coordinator*

Melissa Buchanan, *Outreach Coordinator Eagleville (PT)*

### PROGRAM AREAS

#### RIVER RESTORATION AND WILDLIFE PROTECTION



#### POLICY AND PLANNING



#### OUTREACH AND RECREATION

